

Datasheet for JOT0076-1 Anti-mCherry VHH Antibody

BASIC INFORMATION

Name	Anti-mCherry VHH Antibody
Specificity	mCherry
Species Reactivity	Species independent
Description	Alpaca derived anti-mCherry VHH single domain antibody (molecular weight: 14.7 kDa), expressed in <i>E. coli</i> under conditions free from animal derived components
Conjugate and tags	Un-conjugated; with a 6*His tag at its C-terminal
Tested Applications	ELISA, WB, IF
Purification	Affinity chromatography purified via Ni-charged resin
Format	Liquid
Product buffer solution	25 mM TAPS pH8.5, 500 mM NaCl, 5 mM EDTA, 0.1 % Proclin 300 Solution
Storage	4°C; Do not freeze.
Analyte description	mCherry is a monomeric red fluorescent protein (mRFP) belonging to the mFruits family which is brighter and more photostable compared to the first-generation mRFP1, making them ideal for fluorescence microscopy. mCherry has an excitation maximum at 587 nm and an emission maximum at 610 nm. mCherry protein was derived from DsRed, a red fluorescent protein from the coral <i>Discosoma</i> (disc anemone). mCherry is 236 amino acids (aa) in length with a theoretical molecular weight of 28 kDa and has a crystal structure with the chromophore forming a central helix shielded within an eleven-stranded beta-barrel.

PARAMETERS TESTED ON EACH LOT

QUALITY - TRACEABILITY - INTEGRITY

Life Science Group

The Science Centre, 1 Blaydon Road, Sandy, Bedfordshire, SG19 1RZ

Tel: +44 (0) 1234 889180 Email: sales@lifesciencegroup.co.uk Web: www.lifesciencegroup.co.uk

Life Science Production, Antibody Production Services and Diagnostic Kit Services are divisions of Life Science Group Ltd

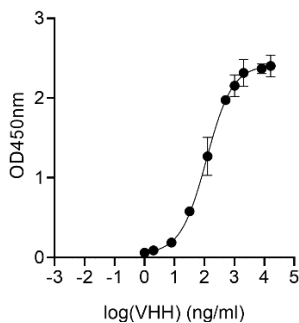
Registered in England and Wales Company Number: 06606016



Product concentration	1 mg/mL by Nanodrop
Purity	≥95% (4-12% gradient SDS-PAGE)
Affinity constant	Not determined
Positive controls	Positive ELISA detected in: recombinant fluorescent protein mCherry Positive WB detected in: mCherry-expressing 293T cells Positive IF detected in: mCherry-expressing PLC/PRF/5 cells
Recommended dilutions	ELISA 1:2000-1:10000 WB 1:1000-1:5000 IF 1:500-1:2000
Material safety note	This product is sold for research use only . Standard Laboratory Practices should be followed when handling this material.

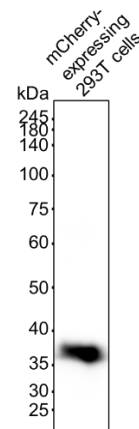
SELECTED VALIDATION DATA

ELISA



Indirect ELISA showing anti-mCherry VHH antibody (JOT0076-1) binding to purified

WB



mCherry-expressing 293T cell lysates were subjected to SDS-PAGE followed by western blot with anti-mCherry

QUALITY - TRACEABILITY - INTEGRITY

Life Science Group

The Science Centre, 1 Blaydon Road, Sandy, Bedfordshire, SG19 1RZ

Tel: +44 (0) 1234 889180 Email: sales@lifesciencegroup.co.uk Web: www.lifesciencegroup.co.uk

Life Science Production, Antibody Production Services and Diagnostic Kit Services are divisions of Life Science Group Ltd

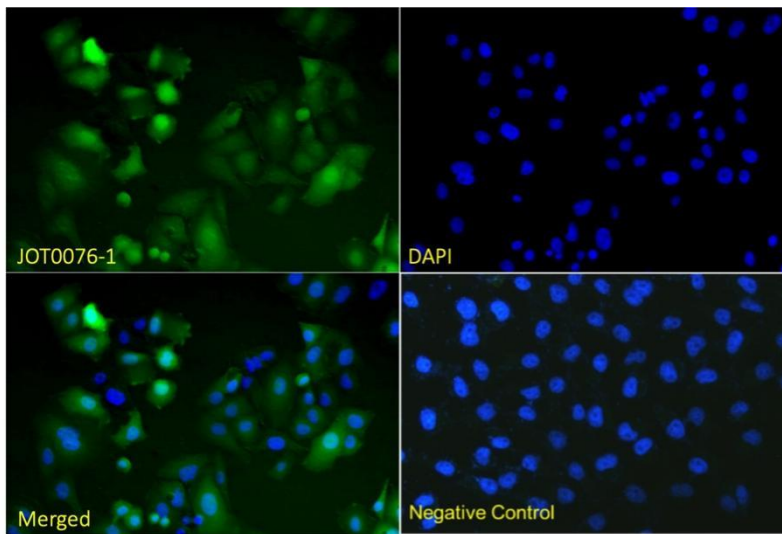
Registered in England and Wales Company Number: 06606016



mCherry protein. Plates were coated with 200ng/well purified protein and binding of JOT0076-1 assessed in serial dilution from 1ng/ml primary antibody in triplicate.

VHH antibody (JOT0076-1) at dilution of 1:3000 incubated at room temperature for 1.5 hours.

IF



Immunofluorescence analysis of paraformaldehyde-fixed mCherry-expressing PLC/PRF/5 cells stained with anti-mCherry VHH antibody (JOT0076-1) at 1:500 dilution followed by MonoRab Rabbit Anti-Camelid VHH Cocktail [iFluor 488] at 1:1000 dilution, showing cytoplasmic staining. The nuclear stain is DAPI (blue). The negative control is non-expressing 293T cells.

QUALITY - TRACEABILITY - INTEGRITY

Life Science Group

The Science Centre, 1 Blaydon Road, Sandy, Bedfordshire, SG19 1RZ

Tel: +44 (0) 1234 889180 Email: sales@lifesciencegroup.co.uk Web: www.lifesciencegroup.co.uk

Life Science Production, Antibody Production Services and Diagnostic Kit Services are divisions of Life Science Group Ltd

Registered in England and Wales Company Number: 06606016

